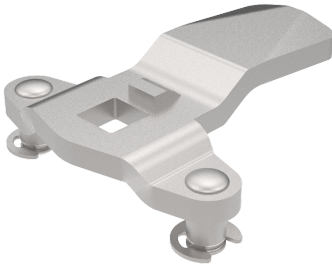


VISION THREE-POINT CAMS STEEL



Three-point cams with projection for swing handles. Stroke: 20 mm. Supplied with E-clips. In the drawing and table below, A is the inside face to engagement point of cam.

MATERIAL

Cam: Steel, zinc plated

RELATED PRODUCTS

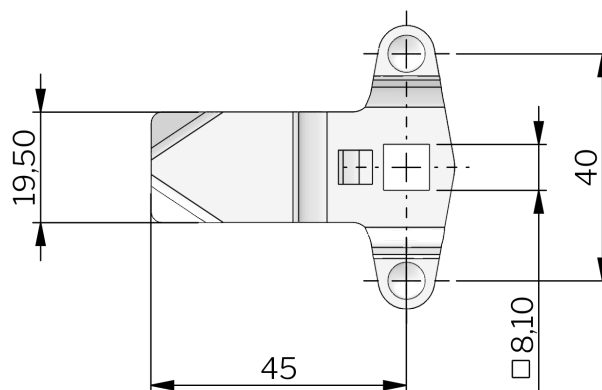
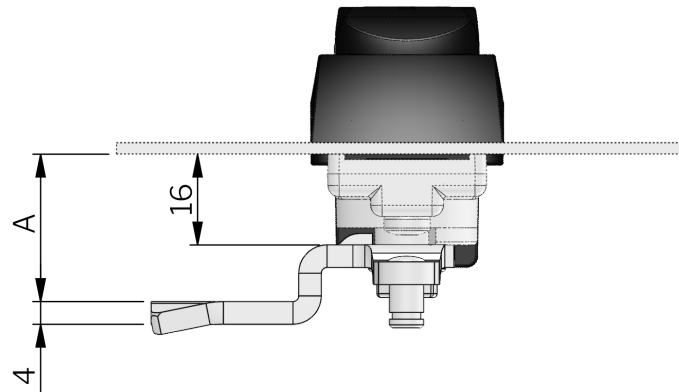
Similar products: 1-008.51

Other materials: 1-008.51

Use the Index Code at [industrilas.com](https://www.industrilas.com)

TECHNICAL INFORMATION

Please note that all cams with dimension A is less than 16 mm can only be used in combination with swing handles (see product ID 1-010 and 1-020).



P/N	Description	Material	A
2321S01P	3-point cam	Steel	2
2321S02P	3-point cam	Steel	4
2321S03P	3-point cam	Steel	6
2321S04P	3-point cam	Steel	8
2321S05P	3-point cam	Steel	10
2321S07P	3-point cam	Steel	12
2321S08P	3-point cam	Steel	14
2321S09P	3-point cam *	Steel	16
2321S10P	3-point cam	Steel	18
2321S11P	3-point cam	Steel	20
2321S12P	3-point cam	Steel	22
2321S14P	3-point cam	Steel	24
2321S15P	3-point cam	Steel	26
2321S16P	3-point cam	Steel	28
2321S17P	3-point cam	Steel	30
2321S18P	3-point cam	Steel	32
2321S20P	3-point cam	Steel	34
2321S21P	3-point cam	Steel	36
2321S22P	3-point cam	Steel	38
2321S23P	3-point cam	Steel	40
2321S24P	3-point cam	Steel	42
2321S27P	3-point cam	Steel	48
2321S28P	3-point cam	Steel	46
2321S29P	3-point cam	Steel	44

* P/N 2321S09P is with straight cam.